

Future Cape Farewell Programme

BBC Commission

A film about Cape Farewell's expeditions to the Arctic, by director David Hinton, will be broadcast on BBC4, 12 January 2006.

Natural History Museum

Following *The Ice Garden*, in June 2006, Cape Farewell launches its first major exhibition as *The Ship - the Art of Climate Change*, a unique national touring programme designed to deepen public understanding of climate change issues. Heather Ackroyd, & Dan Harvey, David Buckland, Peter Clegg, Siobhan Davies, Alex Hartley, Gary Hume, Rachel Whiteread and others of the Cape Farewell team will thread Arctic inspired works and events through the building and outside in the museum gardens. The work will range from a crystallised whale to dance projections, photography and sound art.

Liverpool Biennial

After London *The Ship* travels to the Liverpool Biennial where new works will be shown throughout the city, together with a programme of climate change events.

For Cape Farewell:

Director | **David Buckland**

Project Manager | **Vicky Long**

Media | **Janette Scott** (janettescott@capefarewell.com)

Cape Farewell is a registered charity no. 1094747

For further information about Cape Farewell visit www.capefarewell.com and visit the Contact page to join the mailing list.



For Produced with OOMF!:

Executive Producers | **Tish Francis, Rosemary Richards**

Producer | **Catherine Boyd**

Produced with OOMF! is a not for profit limited company, No. 3740668

For further information about OOMF! visit www.oomf.org.uk

Photography by David Buckland, Dan Harvey and Cape Farewell artists.

Printed on recycled paper.



Design | Visual Philosophy Ltd

The Ice Garden
December 15-18 2005 4pm - 8pm
Clarendon Quad, Bodleian Library, Oxford

We are shaped by our history and biology to frame our plans within the short term, within the scale of a single lifetime. Now we are asked to address the well-being of unborn individuals we will never meet and who, contrary to the usual terms of human interaction, will not be returning the favour...

Ian McEwan, 2005

Cape Farewell and Produced with OOMF! present

The Ice Garden

December 15-18 | 2005

4pm - 8pm

Clarendon Quad, Bodleian Library, Oxford

Admission free

The Ice Garden is the first Cape Farewell exhibition showing works inspired by voyages with artists, scientists and educators into the High Arctic. Artists **Heather Ackroyd & Dan Harvey, Kathy Barber, David Buckland, Peter Clegg, Max Eastley, and Ian McEwan** have developed sound, light, text and sculptural installations for the Clarendon Quad in front of the Bodleian Library.

The Ice Garden features ten two-metre-high columns of ice, signalling the volume of carbon dioxide generated by each person in the UK each year. On a sheet of water, messages and images from the frozen Arctic fleetingly appear. Projected onto the walls of the Bodleian Library, a chilling call to action. Elsewhere in the quad a fragment of glacier, complete with pieces of earth, emits the sound of disintegrating ice.



IceGardenEvents Admission free, no booking required

Friday 16 December, 12 noon-2pm

Sheldonian Theatre, Broad Street, Oxford

Climate – The Forces of Change

An open debate led by Cape Farewell founder and artist **David Buckland** with **Stephen Tindale**, Director Greenpeace UK, and **Kate Hampton**, Climate Change Capitol Bank.

Sunday 18 December, 1-3pm

The Asian Cultural Centre, Manzil Way, Oxford

Climate Change: The impact in Asia

An open discussion led by **Saleemul Huq**, Director of the Climate Change Programme at the International Institute for Environment and Development, with **Prof. Diana Liverman** of Environmental Change, Oxford University, and **David Buckland**.

CapeFarewell Led by artist David Buckland, Cape Farewell is a series of expeditions into the Arctic, exploring the seas that hold the key to understanding the world's oceans and the changes in our weather patterns and climate. The artists who have travelled with Cape Farewell include Heather Ackroyd & Dan Harvey, Kathy Barber, David Buckland, Peter Clegg, Siobhan Davies, Gautier Deblonde, Max Eastley, Nick Edwards, Gretel Ehrlich, Antony Gormley, Alex Hartley, David Hinton, Gary Hume, Ian McEwan, Michèle Noach, Suba Subramaniam and Rachel Whiteread. All have worked under extreme conditions, using the Arctic as a source of 'artistic' food to find new and innovative ways of representing this extraordinary place and highlighting the implications of global warming.

Produced with OOMF! has, over the past five years, created outdoor cultural events and festivals including the Oxford summer millennium event (OOMF!), New Year's Eve event, Oxford Open Water Festival (2004) and open city events. *The Ice Garden* is a development on the company's previous events that used the theme of water as a way of encouraging people to examine and reflect on their relationship to both their local and global environment. Produced with OOMF! aims to open up and transform unusual and historical sites in the city, encouraging access to, and enjoyment of, its rich heritage.

'We are delighted to welcome the Cape Farewell project to Oxford and what better place to bring together a meeting of inspiring minds from the arts and science than the Clarendon Quad of the Bodleian Library, in between the great concert venue of the Sheldonian and one of the best libraries in the world.'

Tish Francis, Chair, Produced with OOMF!

For details see www.capefarewell.com or www.oomf.org.uk

The Ice Garden

December 15-18 | 2005



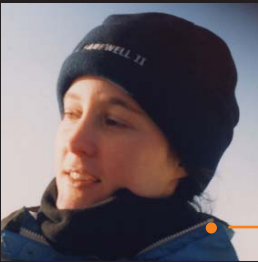
Max Eastley capturing sound from the Noorderlicht schooner, September 2004

'We sometimes think of nature as being slow, but we're missing it all the time. It's very, very fast.'



Peter Clegg & Antony Gormley working on Three Made Places, March 2005

'One kilogram of CO₂ at atmospheric pressure occupies 0.54 of a cubic metre. That is the volume, approximately, taken up by ourselves and the space immediately around us whilst we each also produce 10,000kg CO₂ per annum.'



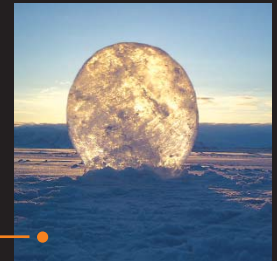
Kathy Barber, September 2004

'What struck me most on the expedition was the sense of isolation, an almost complete absence of people. The changes happening there are global indicators and a global responsibility. Maybe it's easier to live for today, but we have a responsibility to stop acting like there's no tomorrow.'



David Buckland, Ice Projection September 2004

'The art of climate change – we intend to communicate through art works our understanding of the changing climate on a human scale, so that our individual lives can have meaning in what is a global problem.'



Heather Ackroyd & Dan Harvey Ice Lens, March 2005

'The Arctic...like a shard of ice... pristine beauty and clarity... Nature can be beautiful, but also harsh, at times terrifying and unforgiving.' **Dan Harvey**



David Buckland and Ian McEwan, March 2005

'Probably, the only way that an ordinary non-climate scientist like myself is ever going to fully register the situation that we're in, is to really see the beauty of what we stand to lose.' **Ian McEwan**



CLARENDON BUILDING

OLD BODLEIAN LIBRARY

SHELDONIAN THEATRE



How to Love Your Planet

You don't have to go to the Arctic to appreciate the effect that global warming is having on our planet. We're continually being made aware of how our world is being adversely affected by increasing levels of carbon dioxide (CO₂). Although climate change is now widely acknowledged, the challenge is to dramatically reduce the amount of carbon dioxide we generate. For a UK citizen this is a massive 10 tons every year! It doesn't take much to make small changes that will have a big impact on the future health of our planet.

Low Impact Lifestyles

Some of the 101 ways to reduce your carbon footprint:

- 1 Give the elevator a break – **Take the stairs** and get fit!
- 2 **Pull on a jumper** - reduce the temperature setting on your thermostat by 1C° and save 10% on bills
- 3 **Duvet your home:** insulating walls, roofs, cracks and windows can prevent up to 30% loss of heat
- 4 Your electricity immersion heater is equivalent to switching on 300 energy saving light bulbs – **take a shower, take a bath together**
- 5 This is a bad one: your return flight to LA emits 2.6 tons CO₂ per person – **buy a 'voluntary carbon offset'** – help invest in renewable energy solutions
- 6 **Better still** - switch to a green energy supplier who uses renewable sources of energy. It costs only a fraction more and is great for the feel-good factor!
- 7 Walk, bus, bicycle or donkey to school/office/friends. Short journeys produce a disproportionate amount of CO₂
- 8 **SUVs** - 'This car seriously damages the health of our planet'. Why has it become cool to go shopping in a tank when a car is easier to park, more nimble, less embarrassing, cheaper to run *and* has a better colour scheme?
- 9 Unfortunately, **a car driving at 50mph uses 30% less fuel** than a car going at 70mph
- 10 **Buy locally produced food** – the average dinner has travelled 2400km to get to your plate! – One mango uses 4kg CO₂ to arrive for your culinary pleasure!
- 11 Really cool – did you know you can **turn your home into a power station** and sell unused electricity back to the power grid? Let your imagination roll – windmills instead of chimneys, photovoltaic roofs, biomass heating, solar hot water panels...

For the ultimate pub quiz, figure out the other 90 ways to reduce your own personal footprint.

Then answer who said this:

"Reason is humanity's special gift. It allows us to understand the structure of the nucleus. It enables us to explore the heavens. It helps us to conquer disease. Now we must use our reason to find a way in which we can live with nature, and not dominate nature."

ANSWER: Margaret Thatcher, Nov 8th 1989 talking to the UN about climate change



Cape Farewell March 2005 Voyage: Max Eastley, Charlie Kronick, Nick Edwards, Alex Hartley, Antony Gormley, Peter Clegg, Siobhan Davies, Rachel Whiteread, David Buckland, Gautier Deblonde, Dr Tom Wakeford, Heather Ackroyd, Dan Harvey, Ian McEwan.

Some helpful websites

Recycling: www.recyclenow.com

Sustainable energy/reforestation projects: www.climatecare.org

Solar energy: www.solartradeassociation.org.uk

Wind energy: www.windsave.com

Renewable electricity supplier: www.good-energy.co.uk

Planning a flight? Check your emissions first:

www.chooseclimate.org/flying

Taking action: www.greenpeace.org or www.davidsuzuki.org

or www.worldwildlife.org

Energy saving: www.esi.org.uk

www.capefarewell.com was recently awarded World e-Science Winner at the World Summit Awards 2005 part of the UN World Summit on the Information Society Awards. The winning projects will be presented as the world's best at the Award Gala in November 2005.

The Ice Garden is part of a long-term initiative developed by Cape Farewell in partnership with Natural History Museum, funded by the Arts Council England and supported by the Calouste Gulbenkian Foundation. Please see back of brochure for further details of Cape Farewell's forthcoming programme.

The Ice Garden is part of the **Evolving City** programme (www.evokingcity.com) coordinated by Oxford Inspires and funded with Lottery money from the Millennium Commission and Arts Council England through the Urban Cultural Programme, with additional contributions from Arts Council England South East, Oxford City Council, Oxfordshire County Council and SEEDA.

Supported by
The National Lottery[®]
through Arts Council England
& The Millennium Commission



CALOUSTE
GULBENKIAN
FOUNDATION

EVOLVING CITY
Oxford Inspires



SUPPORTED BY
**OXFORDSHIRE
COUNTY COUNCIL**
CULTURAL SERVICES

M
Millennium Commission



With thanks to the Bodleian Library, The Sheldonian Theatre, The University of Oxford and Oxford Inspires.

Bodleian Library
UNIVERSITY OF OXFORD